

# The Village Press

Our Next Meeting is February 24th, 2:15pm at  
Champion's Hall, 6601 Blvd of Champions, North Lauderdale, FL 33068

## FEBRUARY 2013 The Month of Love



Bob Obenland

### *Catching up with Bob!*

We'd like to thank Felix, our D56 rep, for bringing us the update on D56 and indicating that they had a good year. He showed us this year's products and indicated they should be in the stores by April. He indicated that the new books should be in the stores now or soon. If you can't find one you can buy one from "Ms Lit Town" at D56 at 1-800-548-8696.

Don't forget it is time for the 2013 dues. See Peggy at the February meeting. Dues are \$15 for a single and \$25 for the family. If you can't make the meeting you can send your dues to our mailbox:

The Village Landlords  
P. O. Box 670093  
Coral Springs, FL 33067

Jonathan is now working on updating our website. He is moving to a new hosting company, Godaddy. Godaddy is half the cost of what our current host wanted. Once Jonathan has everything moved and running we will let you know. If there is anything you would like to see in the website please e-mail your ideas to Jonathan; [jstout@pdmiami.com](mailto:jstout@pdmiami.com)

There are still some 2013 Village Landlord calendars available. If you did not get a chance to buy your calendar they will be available at the February meeting. They came out wonderful and show pictures from all the 2011 open houses. They are only \$10. See Peggy and Nancy at the meeting. You will also get two extra door prize tickets for each calendar you buy.

Your officers for the positions open for the next two years are:

2nd V/President Gene Armeno, Programs, Jerry Fernon and Membership Elizabeth Bron..

This month Jerry has some Make'n Take projects you will be able to use in your village. For those old enough to remember Burma Shave signs you will be able to make one. One that I like and have used in my village is "Past school houses, Take it slow, Let the little, Shavers grow, Burma Shave." See you at the meeting.....Bob

### *2013 Village Landlords Board*

<u>President</u> Bob Obenland 561-742-0450	<u>Vice President</u> Chris Barrett 954-943-9682	<u>2nd Vice President</u> Gene Armeno 954-969-0041
<u>Treasurer, Membership</u> Peggy Mead 954-974-827	<u>Secretary</u> Joe McPhillips 561-218-9557	<u>Programs</u> Jerry Fernon 954-753-5953
<u>Membership, Publicity</u> Elizabeth Bron 954-899-6844	<u>Hospitality</u> Bonnie Eichholtz 954-972-5045	<u>Parliamentarian</u> Norman Barrett 954-943-9682
<u>Webmaster</u> Jonathan Stout 786-258-3806	<u>Facebook</u> Gisela Gaspar 954-600-3519	<u>Newsletter</u> Roseann Abrams 954-254-4365





## February Meeting Highlights with Jerry!

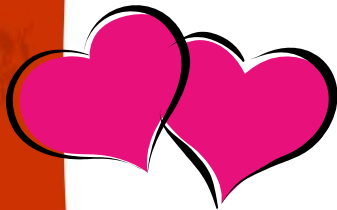


Well here we are again, another month gone by. We just returned from a visit with Mickey and the gang. I don't know why but they never seem to get older! We on the other hand do and getting around those parks sure makes you realize it!

It was good having **Felix Cruz** at our last meeting his incites and knowledge of Dept. 56 provided us with entertainment as well as first hand information. **Thanks FELIX!**

As I mentioned at our last meeting, we are going to have a "make and take" consisting of a fence and/or the "Burma Shave" signs. I will provide the materials and you will be required to glue them together. I think it will be fun for all.

*Big thanks to Felix!*



Burma Shave Signs  
Example



Roseann Abrams

## Editors Corner With Rosie!.....

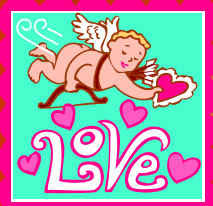
Hi everybody. Want to remind you that our picnic dues are due at the February Meeting! I have attached a form at the end of this brochure for you to fill in and hand in with your dues. Please let us know what dish you will be bringing and how many people are attending in your party.

If anybody has any game ideas for the picnic please see a board member and submit your suggestions. I personally think we should have a karaoke contest to see what kind of wildlife we could attract in that park or chase away!

Food for thought, a few members have been tossing around the idea of perhaps getting together over the summer for some carving workshops. It would be held at a member's house. If you are interested please email me at [gjersey64@aol.com](mailto:gjersey64@aol.com) and I will put you on the contact list if this really comes to play.

On a last note, I want to congratulate **Elizabeth Bron** on getting voted in. **Its Official!!** She is our new Membership Coordinator. Elizabeth and I go way back and we refer to each other as Thelma and Louise, so don't get confused if you hear us calling each other that. Whenever we venture out and put our brains together it's a wild ride!

**Look out everybody! Hold on!**



## *Meeting Minutes with Joe.....*

Board Members Present: Bob Obenland, Chris Barrett, Norm Barrett, Gene Armeno, Joe McPhillips, Bonnie Eichholtz, Jonathon Stout and Roseann Abrams. Nancy Fernon filled in for Peggy Mead with help from Donna Fresquez and Mei-Hua Paige. Bob Obenland called the meeting to order at 2:35pm.

Bob welcomed everyone back for another year, introduced the club officers and welcomed two new members, Frank Cavanaugh and Ken Moore. Frank and Ken had met Bonnie at the Christmas Palace where she did a fine job of recruiting them.

Secretary's Report: The minutes of the last meeting were published in the newsletter. A motion to waive reading the minutes was made by Mark Reynolds and seconded by Rae Campello. Motion was carried.

Treasurer's Report: The report was read by Bob Obenland and there were no questions. Bob informed the membership that we needed a new host for our website and the best price was with Go Daddy for \$220 for five years including the site name. A motion to pay the fee was made by Gunther Heil and seconded by Charlie Heinsinger. The motion was carried. Another motion to accept the treasurer's report was made by Roseann Abrams and seconded by Gene Armeno. The motion was carried.

Membership: Dues are currently due. \$15 for individuals and \$25 for a family membership. No t-shirts are available today.

Raffles: For the benefit of our new members, Gene explained how the raffle and special prizes worked. Remember don't forget to give Gene his special raffle Christmas bags back.

Chris Barrett read a thank you card from Tomorrows Rainbow which was one of the charities we donated to this year. Chris will also make our donation to the Ronald McDonald House.

Hospitality: Bonnie passed the snack list around for next month, remember if you sign up and bring a snack you will get an extra door prize ticket. The annual Village Landlord picnic will be on March 24 at Treetop Park in Davie. We will be at the normal Sabal Palm Pavilion. Tickets are \$10 per person and guests are welcome. The club will provide most of the food but we still need people to sign up for desserts, sides and salads. Please sign up for your dish by the February meeting. Also be aware that there is a fee to get into the park. We will have games and prizes although we need someone to coordinate them since Marlene moved away. If you would like to volunteer please see or call Jerry Fernon.

Calendars: We still have calendars available. When the idea to do the calendars was first brought up, almost everyone said they would buy one. If you have not bought yours yet please do so. The club is making no money from this project but it would be nice to recover what we have spent.

Open Houses: Once again the 2012 open house season was a big success. Bob read the list of everyone who had an open house and thanked them. If you do not attend the open houses please try to go next year as those members put a lot of work into them so that everyone can have a good time. If you have never had an open house or it has just been a long time since you have, please consider having one next year.





## *Meeting Minutes with Joe Cont'd.....*

We are sure that you are proud of your display and we would like to have the opportunity to enjoy it with you. Thank You to Bob Alt for taking photos at all the open houses. The photos are posted on our Facebook page for everyone to see.

Elections: There are three board positions up for election in 2013. They are 2<sup>nd</sup> Vice President, Programs and Membership. No new candidates came forward for 2<sup>nd</sup> Vice President so Gene Armeno has agreed to continue in the position. THANK YOU Gene!

No new candidates came forward for the Programs position so Jerry Fernon has agreed to continue in the position. THANK YOU Jerry! Elizabeth Bron has volunteered to fill the Membership position. She will take over from Gisela, who will continue to be our Facebook person. THANK YOU Elizabeth!

Programs: Jerry will be doing 2 make and takes for the February meeting. Each member will pick which one they want to do since it would require too much material for everyone to do both. Project one will be a fence and project two will be Burma shave signs.

Guest Speaker: After the break, Felix from Dept 56 gave a brief talk about the new release pieces for the various villages. Most of the new items will be arriving in the large dealers starting in April. Felix also explained how the shopping online at Dept 56 works.

Orders are sent to the dealer closest to your location who has the items you are ordering and do not come directly from Dept 56. You can place orders directly with Melinda (Ms. Lit Town) for replacements parts that the dealers do not carry. The best way to contact her is by email. The fall gathering this year is in Connecticut and is selling out fast. If you plan to attend and stay at the hotel, make your reservations soon.

Bob thanked Felix for coming to the meeting and took a motion to adjourn at 4:30pm Motion was made by Mark Reynolds and seconded by Chris Barrett. Motion was carried.

### Door Prizes

- |                                         |                    |
|-----------------------------------------|--------------------|
| 1) Bag of Snow                          | Charlie Heinsinger |
| 2) Ford Fairlane                        | Donna Fresquez     |
| 3) Peppermint Street Curved             | Dan Layton         |
| 4) Set of Trees                         | Genevieve Alt      |
| 5) Buffalo Snow                         | Victoria DeBonis   |
| 6) Cord with LED Light                  | Jonathon Stout     |
| 7) Tis The Season                       | Bob Obenland       |
| 8) DV 20 <sup>th</sup> Anniversary Pins | Michael Wiggins    |
| 9) SV Garbage Truck                     | Frank Cavanaugh    |
| 10) D56 Salt and Pepper Pair            | Betty Hargraves    |

### Raffle Prizes

- |                                     |                  |
|-------------------------------------|------------------|
| 1) Picket Lane Lampposts            | Michael Wiggins  |
| 2) Hayride                          | Jerry Fernon     |
| 3) Christmas Carol Characters       | Pat Piccin       |
| 4) Chopping Firewood                | Rosemary DeJesus |
| 5) Abington Canal Boat              | Gisela Suarez    |
| 6) CIC Hi-De-Ho Nightclub           | Pat Piccin       |
| Mystery House                       |                  |
| DV Persian Rugs                     | Pat Piccin       |
| Special Raffle                      |                  |
| DV Bartons Holiday Greens Value Set | Elaine Smith     |

*the Cupboard*  
unique gifts, home décor and needlework

1600 northeast 26 street  
ft. lauderdale, fl 33305  
(954)663-6363 (800)572-4153  
www.CrossStitchCupboard.com  
Stitch1981@aol.com

*karen owen*  
*wanda irwin*  
*kathy swartzwelder*

mon-fri. 10-5:30  
tues. 10-8:00  
sat. 10-5:00



## Financially Speaking With Peggy...

	Actual 2012
Treasurer's Report	January
Beginning Balance	\$1,457.77
<b>Deposits</b>	
Advertising	\$ -
Membership	\$ 575.00
Picnic	\$ 110.00
NCC Sales	\$ -
Calendars	\$ 60.00
Special Raffle	\$ 60.00
Special Auction	\$ -
Pin Sales/Ed	\$ -
Donations	\$ -
Raffle	\$ 136.00
<b>TOTAL DEPOSITS</b>	\$ 941.00
<b>Expenses</b>	
Bell South	\$ -
Copies	\$ -
Donations	\$ -
Meeting	\$ 45.00
NCC dues/payments	\$ -
Other	\$ 124.02
Picnic	\$ 175.00
	\$ -
WEBSITE	\$ 220.25
PO Box	\$ -
Raffle prizes	\$ -
Refreshments	\$ 20.67
Pins	\$ -
Shirt Sales	\$ -
Shirts	\$ -
Stamps	\$ -
<b>TOTAL EXPENSES</b>	\$ 584.94
Ending Balance	\$1,813.83
Raffle Bank	\$ 50.00
	\$1,863.83

## Don't forget.....

Just a reminder that 2013 dues are now due! Membership dues for an individual is \$15 and for a family is \$25. You can mail your check to our Post Office box or bring it to the February meeting. Don't miss out on all of the wonderful things planned for this year. Become a 'paid in full' Village Landlord member now!

Don't forget that we are having another wonderful picnic in March. Now is the time to bring your \$10 cash or check and let us know you are coming. You can also mail a check to our Post Office box. Good food and good friends mixed with fun and games is the formula for a great day.

As always, remember to wear your club shirt and name tag to all meetings for two extra tickets for the door prize drawings.



## Mark Your Calendar

### FEBURARY

February 4, 2013 pm Board Meeting @ 7:30

February 24, 2013-Village Landlord Meeting @ 2:15



### MARCH

March 4, 2013-Board Meeting @ 7:30

March 24, 2013 – Picnic @ Noon Tree Top Park

### APRIL

April 8, 2013- Board Meeting @ 7:30

April 28, 2013-Village Landlord Meeting @ 2:15



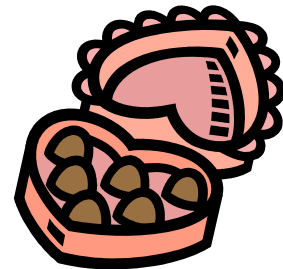
Bonnie Eichholtz

## *From the Goodies Dept. with Bonnie!!!*

Thank you to the following individuals who have volunteered to bring in snacks for our next meeting:

Pat Piccin  
Tania Roque  
Michael & Orlando  
Elizabeth Bron  
Genevieve Alt

Carlos & Gisela Suarez  
Stephanie Taggart  
Kathy Tavernia  
Rosemarie DeJesus



## *Recipe of the Month- Red Velvet Cheesecake for the Month of Love*

### **For the crust:**

1 1/2 cups finely crushed chocolate wafer cookies (about 28 cookies)  
5 tablespoons unsalted butter, melted  
1/3 cup sugar  
Pinch of salt

### **For the filling:**

4 8-ounce packages cream cheese, softened  
1 1/4 cups sugar  
1 tablespoon fresh lemon juice  
1 teaspoon vanilla extract  
2 tablespoons all purpose flour  
4 large eggs  
1 tablespoon unsweetened cocoa powder  
1 teaspoon red food coloring



Make the crust: Preheat the oven to 350 degrees F. Mix the cookie crumbs, melted butter, sugar and salt in a bowl. Press into the bottom and 1 inch up the sides of a 9-inch spring form pan. Put the pan on a baking sheet and bake until set, about 10 minutes. Let cool completely.

Make the filling: Reduce the oven temperature to 325 degrees F. Beat the cream cheese, sugar, lemon juice and vanilla in a stand mixer fitted with the paddle attachment until smooth, 4 to 5 minutes. Add the flour, then beat in the eggs one at a time. Transfer 2 cups batter to a bowl; stir in the cocoa powder and food coloring.

Pour the red batter into the crust, then pour the white batter on top. Using a spoon, pull some of the red batter up from the bottom of the cake and swirl. Bake until the edges are set but the center is still wobbly, about 1 hour, 20 minutes.

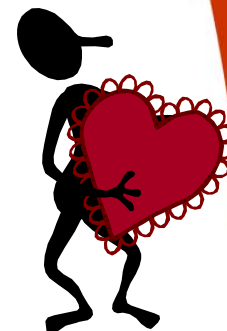
Turn off the oven but keep the cake inside to cool, 20 minutes. Run a knife around the edge of the pan (don't remove the spring form side), then transfer to a rack to cool. Refrigerate at least 4 hours before slicing.

BE  
MINE



**Wear your Village Landlords Shirt**

- **Wear your Village Landlords Nametags**
- **Volunteer to bring in goodies**
- **Purchase a calendar**

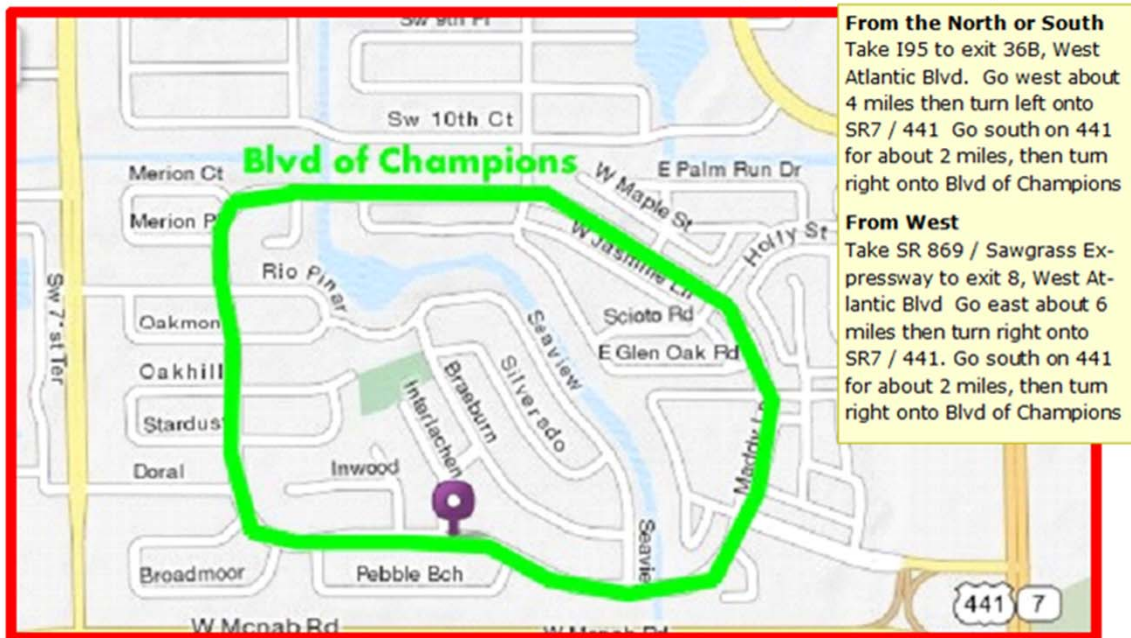


***All to receive extra door prize tickets!***

**Our Next Meeting is February 24, 2013, 2:15pm at  
Champion's Hall, 6601 Blvd of Champions  
North Lauderdale, FL 33068**

[Map to the NEW site for the Village Landlords Meeting Location](#)

**New Meeting Location: Champion's Hall  
6601 Blvd of Champions, North Lauderdale, FL 33068**



**Christmas etc.**



Bill Laughlin

**561 - 805 - 7000**

Fax: 561. 832 . 8861

[www.XMAS.ETC.com](http://www.XMAS.ETC.com)

## *Did you know?*



### **When, where and how did Valentine's Day originate?**

The word Valentine comes from Saint Valentine of Rome and Saint Valentine of Terni who were martyred on February 14th.

There is speculation that these saints are the same because both are known for their compassionate and loving acts. It is said that Saint Valentine once signed a letter "From your Valentine" which is still a customary tradition.

During the Middle Ages, Europeans believed that birds chose their mates each year on February 14. Legend has it that Europeans began to emulate the ornithological practice.

While the facts are unknown, this holiday has formed to celebrate love and romance.

## **VILLAGE LANDLORDS MEMBERSHIP APPLICATION**

**DATE: \_\_/\_\_/2013**

Membership year is from January 1st—December 31. All information is confidential and used for club purposes only. Please fill out application and return along with the membership fee of \$15.00 per person or \$25.00 per family. Make checks payable to The Village Landlords, P. O. Box 670093 Coral Springs, FL 33067.

NAME: \_\_\_\_\_  
ADDRESS: \_\_\_\_\_  
CITY: \_\_\_\_\_  
STATE: \_\_\_\_\_ ZIP: \_\_\_\_\_  
HOME PHONE #: \_\_\_\_\_  
E-MAIL: \_\_\_\_\_

What year did you start collecting? \_\_\_\_\_

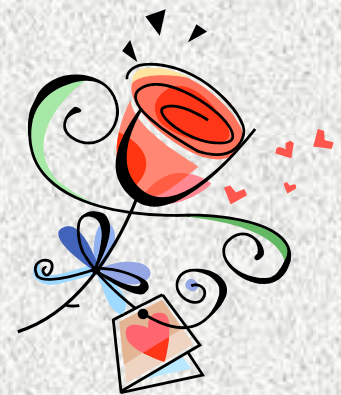
Would you be interested in hosting a Christmas House Tour in December or January?

☐ Yes ☐ No ☐ Possibly ☐ Need more information

What activities would you be interested in seeing at the meetings?

☐ Display Techniques ☐ Guest Speakers ☐ Social Events ☐ Workshops  
☐ Other \_\_\_\_\_

Comments : \_\_\_\_\_  
\_\_\_\_\_  
\_\_\_\_\_



# 2013 VILLAGE LANDLORDS PICNIC

March 24<sup>th</sup>, 2013 Tree Top Park

NAME: \_\_\_\_\_

# OF ATTENDEESS: \_\_\_\_ @ \$10.00 pp = \$ \_\_\_\_\_

DISH YOU WILL BE BRINGING:

\_\_\_\_\_

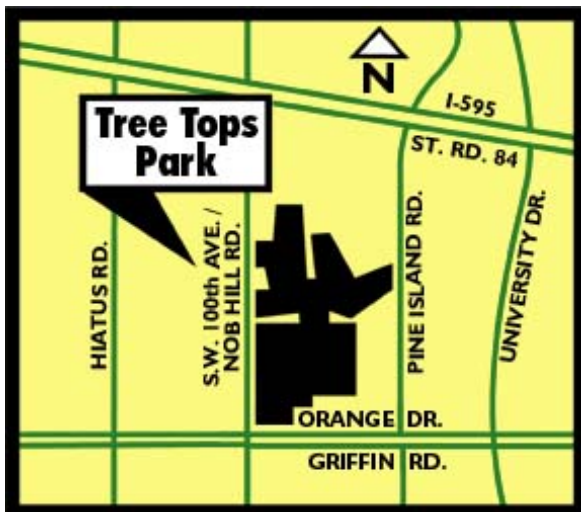
\_\_\_\_\_

---

*Detach top half and submit to Village Landlords Meeting on  
February 24<sup>rd</sup>, along with payment if you have not done so.  
Thank you!*

---

## TREE TOP PARK DIRECTIONS



**From I-595**, exit at Nob Hill Road. Travel 2.5 miles south on Nob Hill. Tree Tops will be on the left hand side.

**From I-95**, exit at Griffin Road. Travel west approximately 8.2 miles to Nob Hill Road. Turn right. Travel a quarter of a mile north. The entrance to the park will be on the right hand side (east side) of the road.

**From I-75**, exit at Griffin Road and travel east approximately 4.7 miles to Nob Hill Road. Turn left. Travel a quarter of a mile north. The entrance to the park will be on the right hand side (east side) of the road.