

The Village Press

Our Next Meeting is February 23rd, 2:15pm at
Champion's Hall, 6601 Blvd of Champions, North Lauderdale, FL 33068

FEBRUARY 2014

TABLE OF CONTENTS

| | |
|--------------------|----------|
| Presidents Message | Page 2 |
| Jerry's Message | Page 3 |
| Editors Corner | Page 3 |
| Meeting Minutes | Page 4-5 |
| Financials | Page 6 |
| Calendar | Page 7 |
| Snacks/List | Page 7 |
| Auction List | Page 7 |
| Meeting Map | Page 8 |
| Picnic Form | Page 9 |
| Application | Page 10 |
| Sponsors | Page 11 |



2014 Village Landlords Board

| <u>President</u> Chris Barrett 954-943-9682 | <u>Vice President</u> Bonnie Eichholtz 954-972-5045 | <u>2nd Vice President</u> Gene Armeno 954-969-0041 |
|--|---|--|
| <u>Treasurer</u> , Bob Obenland 561-742-0450 | <u>Secretary</u> Joe McPhillips 561-218-9557 | <u>Programs</u> Jerry Fernon 954-753-5953 |
| <u>Membership, Publicity</u> Victoria DeBonis 954-295-9325 | <u>Hospitality</u> Mike Abrams 954-309-0884 | <u>Parliamentarian</u> Norman Barrett 954-943-9682 |
| <u>Webmaster</u> Jonathan Stout 786-258-3806 | <u>Facebook</u> Gisela Gaspar 954-600-3519 | <u>Newsletter</u> Roseann Abrams 954-254-4365 |

The Village Press

Message from our new President Chris.....



Well, here I go again, my second round as President.

My first order of business is to remind everyone that dues are due. You can pay them at the meeting or mail your check to Bob Obenland.

I'm looking forward to working with the wonderful people on our Board who have volunteered their time and knowledge of village to make our club the success it has been. A special thanks to those outgoing officers, and those who are staying on in a different position.

Following are our new Board members: Bonnie Eichholtz , Vice President; Gene Armeno , 2nd VP; Bob Obenland , Treasurer; Joe McPhillips, Secretary; Jerry Fernon, Programs; Victoria DeBonis, Membership; Mike Abrams, Hospitality; Norman Barrett, Parliamentarian; Jonathan Stout, Webmaster, Gisela Gaspar, Facebook , and Roseann Abrams, Newsletter.

Our February meeting will be a slide show of the 2013 Open Houses, with the host of each Open House talking about their display and answering any questions you may have. For those who attended the Open Houses, remember to bring the "purple tickets" Gene gave you at the January meeting. If you weren't there, he will have them for you at the February meeting. We will also have an auction of five of the original Snow Village houses. You can find the list of these houses under our hospitality section in the newsletter.

We are grateful to "the Cupboard", one of our sponsors, for donating CIC, North Pole, and Dickens houses, accessories, trees, etc., for prizes at our meeting. They have been a good sponsor to our club for many years.

Don't forget to sign up and pay for the picnic on March 23rd. You will find a form in this Newsletter to complete and turn in to Bonnie at the February meeting or mail as directed on the form.

Get well wishes go out to Gail Reynolds. Mark tells me she is coming along, and hopefully will be able to attend our picnic. We miss her at our meetings. Also to Jerry Fernon who is nursing a broken knee cap.

See you at the meeting



More than 36 million heart-shaped boxes of chocolate are sold for Valentine's Day each year.



Jerry Fernon



The oldest surviving love poem till date is written in a clay tablet from the times of the Sumerians around 3500 BC.

Update with Jerry!

Hi everyone! I don't have much to say but I would like to pass on to you that at the February meeting Jonathan will show you a slide show of the open houses over the holidays. I think it would have been nice if the member whose pictures were being shown would say something about what they did and how they did it, perhaps even stopping the slide show to explain some of their thoughts and techniques. I would also like to say that **Bob Alt** took most of the pictures and what a great job he did!

I have made contact with Miguel from Christmas Palace and he has agreed to come to our April Meeting and show us some of his extraordinary talent. I'm looking forward to that one! I may not be at the February meeting depending on the outcome of my doctors tests concerning my back surgery so enjoy the show!

Hope to see you there.....Jerry



Roseann Abrams



Editors Corner With Rosie!.....


Happy belated Valentines Day!

Wow, February is almost over, I don't know where this time is slipping off to!

I just want to say my husband volunteered himself for hospitality, I am praying it doesn't wind up as a job for me! It had better not! We really would like for people to step up and help out. Everyone enjoys our meetings and our little snack break and I know none of you want to see it go. Please help when and if you can, lets keep this club thriving!

Gene will be holding a "special auction" on some valuable houses he picked up. They are older houses but worth some money today, so please bring some cash and let the auction begin! A list of the items to be auctioned is located under the hospitality section of our newsletter check it out! Please remember our special raffle will take place for the open house attendances! Be sure to bring your purple tickets and if you haven't received them yet bring in your open house form signed by the hosts to get your tickets!

Also at the end of the newsletter is the picnic flyer. If you haven't already done so please fill out what you will be bringing. Thanks!

Please notice throughout the newsletter I've placed some  fun facts and tidbits about the month of February!

See you all on February23rd.....Roseann

January Meeting Minutes with Joe!



Village Landlords General Meeting January 26, 2014

Board Members Present: Chris Barrett, Norm Barrett, Joe McPhillips, Gene Armeno, Bob Obenland, Roseann Abrams, Jonathon Stout and Victoria DeBonis

Bob Obenland called the meeting to order at 2:35pm. Bob welcomed everyone back and thanked all those who hosted open houses this season. He then introduced the current board and announced that Victoria DeBonis will be taking over as our membership coordinator. At this meeting, Nancy Fernon filled in as treasurer for Peggy Mead and Josephine Armeno took charge of tickets for the house tour prizes. Bob also introduced Felix from Dept 56 and thanked him for his yearly visit to fill us in on the latest news from Dept 56.

Bob also welcomed two new members, Marvel and William Smith. They collect It's A Wonderful Life. Thomas Kincaid pieces and various Dept 56 pieces that have a special significance to their lives.

Secretary's Report: The report was in the newsletter and there were no questions. A motion to accept the report was made by Michael Wiggins and seconded by Roseann Abrams. The motion was passed.

Treasurer's Report: The report was read by Bob Obenland for Peggy Mead. There were no questions and a motion to accept the report was made by Charlie Heinsinger and seconded by Debbie King. The motion was passed.

Membership/Facebook: Victoria will be updating the membership list to include the new members which should bring us to 88 members. She will also continue to update Facebook regularly.

Prizes/Raffles: Gene has 2 special pieces to raffle off as prizes for those who attended the open houses. Josephine will be giving tickets to attendees and the drawing will be at the Feb meeting.

Hospitality: Bonnie passed the list around to sign up for Feb snacks. Remember those who sign up and bring treats will get extra door prize tickets. Bonnie asked for volunteers to take over hospitality and bring the ice chest and drinks. **Mike Abrams** was kind enough to step up and take over for Bonnie. THANK YOU MIKE!!!! Bonnie will continue to organize the annual picnic.

Newsletter: Roseann continues to do a great job and the newsletter is now available on our website.

January Meeting Minutes with Joe Cont'd!

Picnic: The picnic will be on March 23rd- same time same place and same price. Please sign up to bring your covered dish. Directions and information will be in the newsletter. Hopefully, Mark Reynolds will be able to do games again but if not we will make arrangements.

Elections: Since no other candidates came forward, the open board positions are elected as follows President Chris Barrett, 1st Vice President Bonnie Eichholtz, Secretary Joe McPhillips and Treasurer Bob Obenland. Congratulations to the new officers!!

Next Meetings: February meeting will be a make and take by Jerry. March meeting is the picnic. April meeting will feature Miguel from Christmas Palace to do a demonstration. After the break, Felix spoke to the club about various events and new pieces from Dept 56. They had a very good year sales wise and also brought in a new president for the company who is very enthusiastic about product development. The company is bringing out a new subset to Dickens Village based on the popular television show Downton Abbey. On the other side, they are stopping the Williamsburg Village and may also stop Winters Frost. One of the most popular pieces for the year was National Lamppoon Christmas which sold out. Felix also noted that we did not lose any dealers this year but also did not gain any. Felix is always available for questions; you can ask Jerry for his contact information. Another good source of information is Melinda, Miss Lit Town, and she will respond best if you email her.

We ran out of time for the make and take that Jerry had planned but he passed out the materials and gave an explanation of how to make trees and hedges from air conditioning filters. See you all at the next meeting!

Door Prizes

- Set of Trees
- Christmas Bazaar Sign
- Our Own Village Park Bench
- CL 20th Year Event Piece & Car with Tree
- CIC I'm A Daddy Have A Cigar
- NP The Little Ballerina
- DV 20th Anniversary History Pins
- DV Listening For The Ocean
- Village Fence Set of 2
- Treetop Lampposts

Raffle Prizes

- DTails 2013
- Wolves In The Woods
- Village Corral Fence Set Of 4
- A Christmas Carol Reading
- DV Walter Key Scrivener

Mystery House

DV Finest Persian Rugs and Accessory

Special Raffle

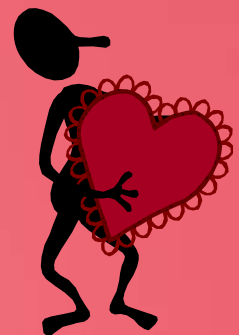
- Christmas At Lakeside Park Pavilion
- NCC Traders Pin Shop

Genevieve Alt
Joe McPhillips
Josephine Armeno
Nancy Fernon
Genevieve Alt
Gisela Suarez
Gisela Suarez
Joe LaMonica
Gisela Suarez
Mei-Hua Paige

Elaine Smith
Mike Abrams
Norm Barrett
Dottie Winzell
Kathy Tavernia

Victoria DeBonis

Orlando Arroyo
Mike Abrams



The Village Press



Bob Obenland

Financially Speaking with Bob

It's hard to believe we are two months into 2014 so it is time for everyone to pay their dues. Just a reminder that our dues are \$15 for an individual and \$25 for a family.

Please remember to bring your check or cash to the February meeting or drop a check in the mail to:

The Village Landlords
PO Box 670093
Coral Springs, FL 33065

In January we picked up some more prizes so come to the meeting and you may go home with one.

See you at the meeting.....Bob



In the Middle Ages, young men and women drew names from a bowl to see who their valentines would be.

They would wear these names on their sleeves for one week. To wear your heart on your sleeve now means that it is easy for other people to know how you are feeling.

| | Actual |
|-----------------------|--------------------------|
| | Jan-14 |
| | Total |
| Treasurer's Report | |
| Beginning Balance | \$1,429.87 |
| Deposits | |
| Advertising | \$0.00 |
| Membership | \$310.00 |
| Picnic | \$0.00 |
| NCC Sales | \$0.00 |
| Inventory Sales | \$0.00 |
| Calendars | \$0.00 |
| Special Raffle | \$47.00 |
| Special Auction | \$0.00 |
| Pin Sales/Ed | \$53.00 |
| Donations | \$0.00 |
| Raffle | \$75.00 |
| Total Deposits | \$485.00 |
| Expenses | |
| Bell South | \$0.00 |
| Copies | \$0.00 |
| Donations | \$0.00 |
| meeting | \$45.00 |
| NCC dues/payments | \$36.00 |
| Other | \$0.00 |
| Calendar | \$0.00 |
| Picnic | \$0.00 |
| Storage | \$0.00 |
| WEBSITE | \$0.00 |
| PO Box | \$0.00 |
| Raffle Prizes | \$245.00 |
| Refreshments | \$22.81 |
| Pins | \$0.00 |
| Shirt Sales | \$0.00 |
| Shirts | \$0.00 |
| Stamps | \$11.45 |
| Total Expenses | \$360.26 |
| Ending Balance | <u>\$1,554.61</u> |
| Raffle Bank | <u>\$50.00</u> |
| | <u><u>\$1,604.61</u></u> |

Mark Your Calendar

FEBRUARY

February 23rd, 2014-Village Landlord Meeting @ 2:15

MARCH

March 3, 2014-Board Meeting @ 7:30

March 23, 2014 – Picnic –Tree Top Park

APRIL

April 7, 2014-Board Meeting @7:30

April 27, 2014-Village Landlord Meeting @ 2:15



From the Goodies Dept. with Mike!!!

Thank you to the following individuals who have volunteered to bring in snacks for our next meeting:

Tania Rosue
Marvel Smith
Donna Fresquez
Michael and Orlando
Debbie and Bill King
Elaine Smith
Genevieve and Bob Alt

REMEMBER:

If you are not on the list, you can still bring in snacks for a ticket!



SPECIAL AUCTION

ITEM NAME

VALUE

#50083 Haversham House
No Box

\$37.00-\$122.00

#50512-Depot & Train with 2 Train Cars
No Sleeve

\$65.00-\$120.00

#50920 Resort Lodge
No Box

\$55.00-\$165.00

#50245 Cumberland House

\$42.00-\$54.00

#54836 Christmas Cove Lighthouse

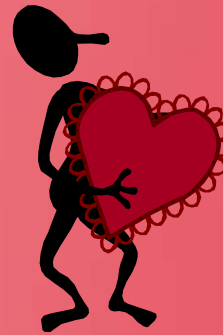
\$60.00-\$74.00





About 1 billion Valentine's Day cards are exchanged in US each year. That's the largest seasonal card-sending occasion of the year, next to Christmas.

- Wear your Village Landlords Shirt
- Wear your Village Landlords Nametags
- Volunteer to bring in goodies

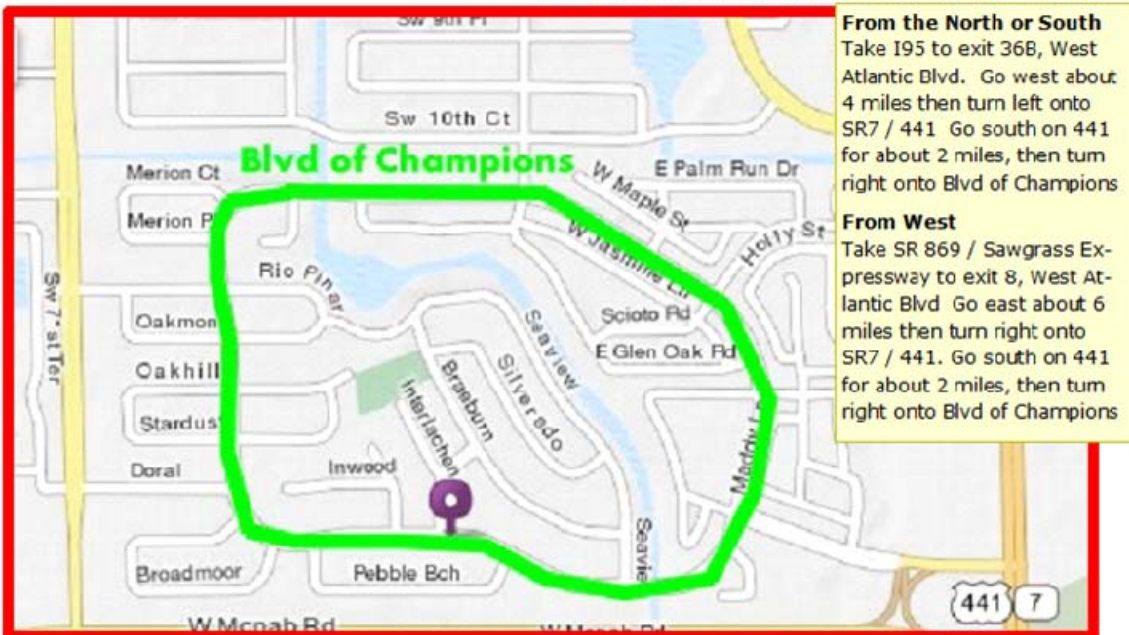


All to receive extra door prize tickets!

**Our Next Meeting is February 23rd, 2:15pm at
Champion's Hall, 6601 Blvd of Champions
North Lauderdale, FL 33068**

[Map to the NEW site for the Village Landlords Meeting Location](#)

**New Meeting Location: Champion's Hall
6601 Blvd of Champions, North Lauderdale, FL 33068**



From the North or South
Take I95 to exit 36B, West Atlantic Blvd. Go west about 4 miles then turn left onto SR7 / 441 Go south on 441 for about 2 miles, then turn right onto Blvd of Champions

From West
Take SR 869 / Sawgrass Expressway to exit 8, West Atlantic Blvd Go east about 6 miles then turn right onto SR7 / 441. Go south on 441 for about 2 miles, then turn right onto Blvd of Champions

2014 VILLAGE LANDLORDS PICNIC

March 23, 2014 Tree Top Park

NAME: _____

OF ATTENDEESS: _____ @ \$10.00 pp = \$ _____

DISH YOU WILL BE BRINGING:

*Detach top half and submit to Village Landlords Meeting on February 23rd, along with payment if you have not done so.
Thank you!*

TREE TOP PARK DIRECTIONS



From I-595, exit at Nob Hill Road. Travel 2.5 miles south on Nob Hill. Tree Tops will be on the left hand side.

From I-95, exit at Griffin Road. Travel west approximately 8.2 miles to Nob Hill Road. Turn right. Travel a quarter of a mile north. The entrance to the park will be on the right hand side (east side) of the road.

From I-75, exit at Griffin Road and travel east approximately 4.7 miles to Nob Hill Road. Turn left. Travel a quarter of a mile north. The entrance to the park will be on the right hand side (east side) of the road.



Did you know?



Viola (plant) and the Primrose are the birth flowers for February.



On February 6, 1952, Princess Elizabeth became Queen Elizabeth II of Great Britain.



February 1910, the Boy Scouts of America was incorporated..

VILLAGE LANDLORDS MEMBERSHIP APPLICATION

DATE: ___/___/2014

Membership year is from January 1st—December 31. All information is confidential and used for club purposes only. Please fill out application and return along with the membership fee of \$15.00 per person or \$25.00 per family. Make checks payable to The Village Landlords, P. O. Box 670093 Coral Springs, FL 33067.

NAME: _____

ADDRESS: _____

CITY: _____

STATE: _____ ZIP: _____

HOME PHONE #: _____

E-MAIL: _____

What year did you start collecting? _____

Would you be interested in hosting a Christmas House Tour in December or January?

Yes No Possibly Need more information

What activities would you be interested in seeing at the meetings?

Display Techniques Guest Speakers Social Events Workshops

Other _____

Comments : _____

What do you collect?

- Dickens' Village
- Christmas in the City
- New England Village
- Snow Village
- North Pole
- Alpine Village
- Snowbabies
- Snowbunnies
- Winter Silhouette
- Little Town of Bethlehem
- Seasons Bay

Other:

sponsors

Let's show them our support!



The Silver Sleigh
 A Unique Holiday Shoppe
 Christmas • Flowers • Gifts
The Silver Sleigh
 1319 East Sample Road
 Pompano Beach, FL 33064
 (954) 943-4388

the Cupboard
 unique gifts, home décor and needlework



1600 northeast 26 street
 ft. lauderdale, fl 33305
 (954)563-6363 (800)572-4153
 www.CrossStitchCupboard.com
 Stitch1981@aol.com

| | | |
|--------------------|----------|---------|
| karen owen | mon-fri. | 10-5:30 |
| wanda irwin | tues. | 10-8:00 |
| kathy swartzwelder | sat. | 10-5:00 |

Christmas etc.
 561 - 805 - 7000



Fax: 561. 832 . 8861
 www.XMAS.ETC.COM
 Bill Laughlin



TERRI'S HALLMARK

1357 W. PALMETTO PARK RD.
 BOCA RATON, FL 33486
 Tel: (561) 391-3410
 Fax: (561) 391-7987



THE CHRISTMAS PALACE

800 NE 13th St.
 Ft. Lauderdale, FL 33304
 Phone: 954-763-1403
 9820 NW 77th Ave.
 Hialeah Gardens, FL
 33016
 Phone: 305-558-5352

20% OFF FOR
 VILLAGE LANDLORDS

